

# BEFORE & AFTER

10  
**QUICK**  
WEEKEND  
PROJECTS!  
*p. 6*

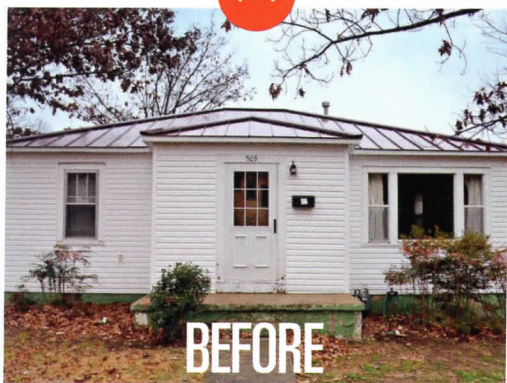
## BOOST CURB APPEAL

GO INSIDE  
THIS  
1,000 SF  
REMODEL  
*P. 42*

**THE BEST  
UPDATES:**  
BATHS, KITCHENS,  
CLOSETS & MORE

**ADD STORAGE!**  
SMART BUILT-INS  
& BENCHES

MAKEOVERS  
THAT DON'T  
BREAK  
THE BANK



**BEFORE**

2017

Display until June 12

\$12.99 U.S.



**BHG** specials™



# — A HOME IN — BALANCE

By **JEANNE BLACKBURN** | Photos **HELEN NORMAN** |  
Field Editor **JEANNE BLACKBURN**

*This suburban two-story needed an update,  
and the contractor-homeowners wanted the change  
to be subtle yet dramatic.*



BEFORE



**OPPOSITE BEFORE** The exterior was bland. It fit the neighborhood, but there was nothing eye-catching about the design or its execution. **BELOW** The house now has more presence because of the effective use of color and the enlarged front portico. Repeating the curved line over the front door and the garage-door windows unifies the new elements. **RIGHT** Larger shutters help define the architecture of the house, and high-contrast black adds punch against the painted brick and siding—which were painted the same mossy green color to blend the two materials.



When Susan and Rick Matus set out to give their suburban Washington, D.C., home a much-needed facelift, they weren't concerned about hiring the right contractor—Case Design/Remodeling is their family business. They just needed the right approach.

When the couple bought their 30-year-old home, they realized that the bland exterior had potential, but they didn't want a renovation of the exterior to outshine other homes in their established neighborhood. The fact that the work would showcase their professional expertise, problem-solving skills, and creativity was a bonus. The goal was to construct a new exterior portico, update the facade, and improve their home's curb appeal.

An arch motif—in the barrel-vault portico ceiling and the windows of a new Craftsman-style garage door—unites the home's front facade. Standing-seam metal roofs appear on the new porch, the main house gables, and the main gable's eyebrow. Light fixtures and door hardware in the same dark bronze finish further unify the updates.

"The best thing about the finished product is how well the new portico along with all the new elements and finishes we added enhance the original bland brick home," Susan says.

And as for the contractor? Susan says, "How much easier could it get? No arguments, no promises that were not fulfilled!"

*Resources begin on page 93.*









**OPPOSITE BEFORE** The original front door was predictable for a 1980s house—its Federalist style didn't offer much visual presence. The homeowners wanted to increase the importance of the entry by adding a portico extension, yet they did not want the door to visually recede. **OPPOSITE** Craftsman-design paneling on the new entry door inspired the same motif on the door's sidelights and the alcove's wall panels.

**BELOW** A new garage door, echoing the Craftsman-design arch of the new entry, is fine-tuned with dark metal hardware and period lighting. **LEFT** A mix of curvilinear and straight design details creates rhythm and adds interest to the impressive front portico. Curved corbels and ceiling offer a counterpoint to straight lines like the standing-seam roof and Craftsman-style architectural details.

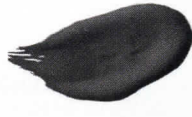
## THE PALETTE

A soft, mossy green is paired with creamy white trim and charcoal accents.



**BODY**  
CROQUET  
AF-455

BENJAMIN MOORE



**ACCENTS**  
UNIVERSAL BLACK  
2118-10

BENJAMIN MOORE



**TRIM**  
SIMPLY WHITE  
OC-117

BENJAMIN MOORE





# GET THE LOOK

Boost curb appeal with these updates. You'll raise your home's value, whether you want to stay or put your house on the market.

1



2



3



4

1. MASONITE BARRINGTON FIBERGLASS ENTRY DOOR in mahogany with Marco decorative glass, \$2,984, [masonite.com](http://masonite.com)  
2. BEHR MARQUEE EXTERIOR PAINT IN SATIN, \$47.98/gallon, [behr.com](http://behr.com)

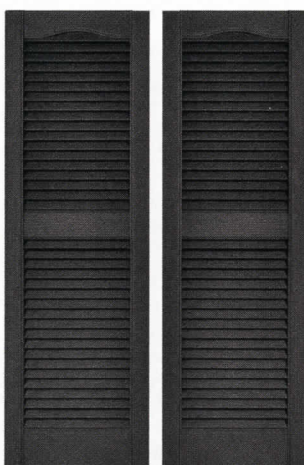
3. FYPN POLYURETHANE DENTIL BLOCK, 6¼ x 5½ x 11½ inches, \$36, [homedepot.com](http://homedepot.com)

4. HOME DECORATORS COLLECTION ANTIQUE BRONZE OUTDOOR LED SMALL WALL LIGHT, \$50, [homedepot.com](http://homedepot.com)

5. BUILDERS EDGE VINYL EXTERIOR SHUTTERS PAIR, 15 x 48-inches in Musket Brown, \$41, [homedepot.com](http://homedepot.com)

6. CLASSIC 14-FOOT RIB STEEL ROOF PANEL in Charcoal, \$44 each, [homedepot.com](http://homedepot.com)

5



6

